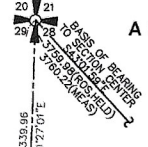
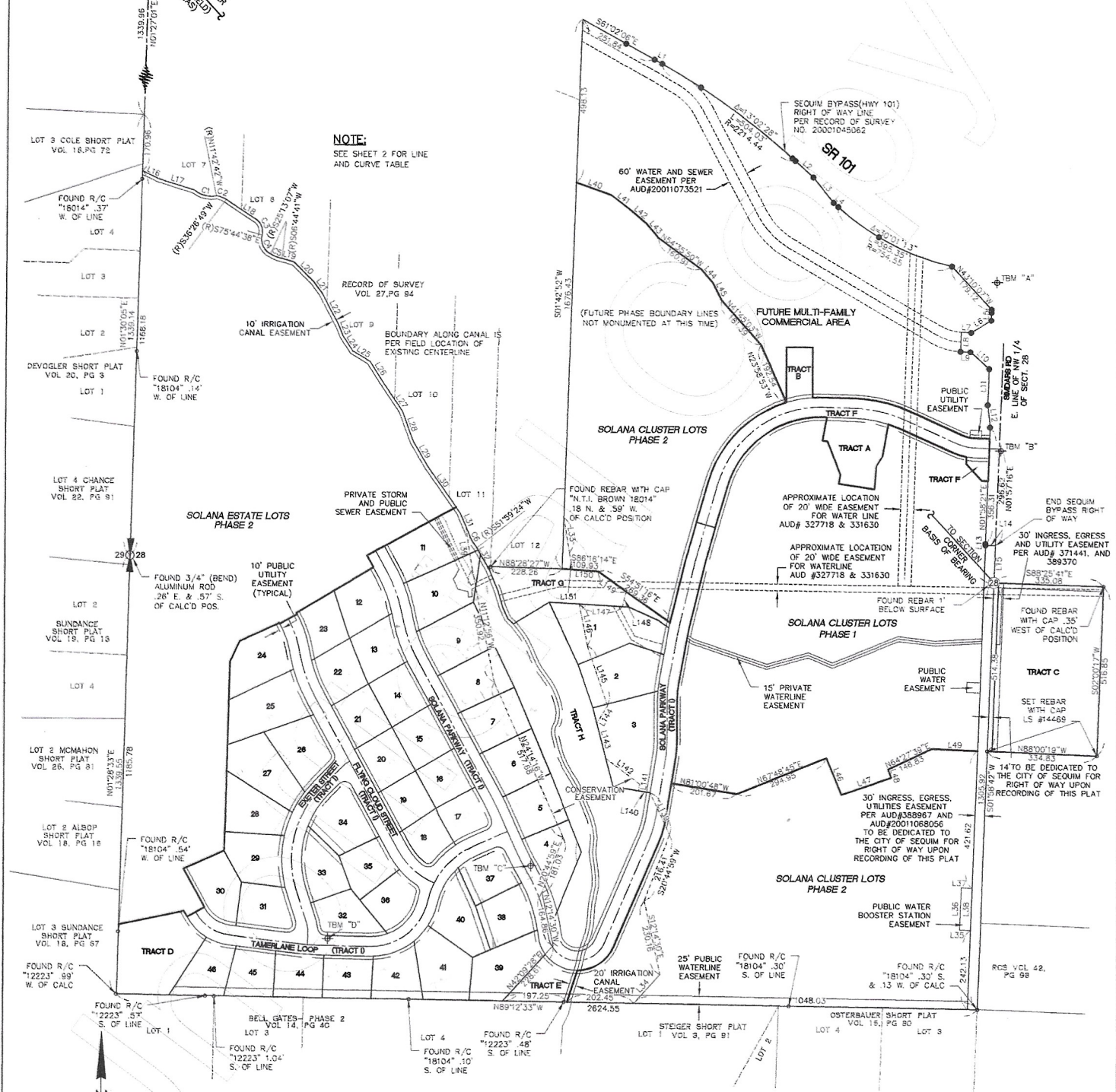


SOLANA ESTATE LOTS PHASE 1

A POR. OF THE W 1/2 AND THE NW 1/4 OF THE SE 1/4 OF SEC. 28, TWP., 30 N., RGE., 3 W., W.M.
CLALLAM COUNTY, WASHINGTON



NOTE:
SEE SHEET 2 FOR LINE
AND CURVE TABLE



LEGEND:

- FOUND CENTER OF SECTION AS NOTED
- FOUND 3" BRASS DISK WITH SECTION CORNER STAMP
- FOUND SECTION QUARTER CORNER (DAMAGED, HELD CALCD POSITION)
- FOUND REBAR WITH CAP "22328" PER ROS NO. 20001045062
- FOUND/SET REBAR AND CAP AS NOTED
- SET TEMPORARY BENCH MARK



4010 Lake Washington
Blvd. N.E., Suite 300
Kirkland, W.A. 98033
Tel (425) 827-5874
Fax (425) 822-7216



JOB NO HANN-0001
SHEET 3 OF 15

VOL 14
PG 89

VOL/PG